



Sugar Point RESORT

LEECH LAKE, MN

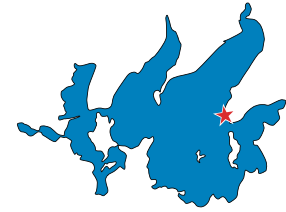
218-654-3150
10125 Sugar Point Dr. NW
Federal Dam, MN 56641
CandJ@sugarpoint.com



LEECH LAKE



Map not to scale. Intended for reference only.



Sugar Point RESORT

LEECH LAKE, MN

218-654-3150
10125 Sugar Point Dr. NW
Federal Dam, MN 56641



Cabins



1, 2 & 3 Bedroom,
modern, fully equipped, lakefront view Cabins

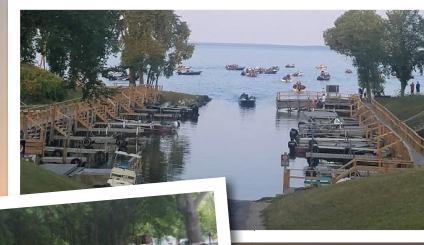
Great for
small to large fishing groups
and family vacations!



Our cabins feature *well equipped kitchens.*
Each cabin has 1 or 2 full bathrooms.

Boats

Your boat is welcome! You may rent a boat slip in our protected harbor, where electric outlets, gas, oil and bait are available.

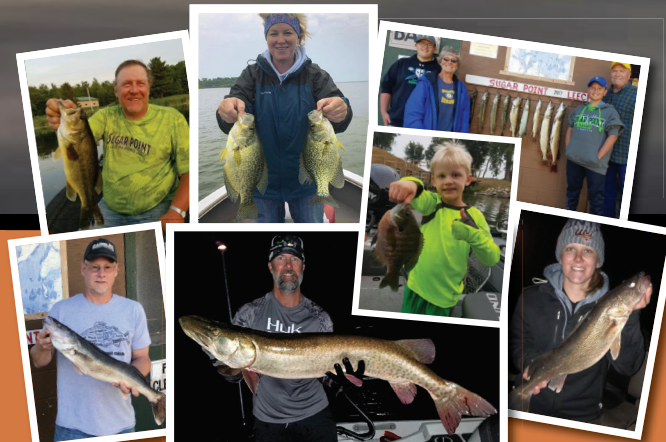


Boats Available

to rent by the day or the week.

Fishing

Sugar Point Resort's central location provides great access to Leech Lake's diverse waters. You can fish protected bays for bass and pan fish or explore miles of shoreline. The lake affords plenty of family fun but is also recognized as one of Minnesota's top producers of walleyes, northerns and trophy muskies.



Amenities

• **Indoor Heated Pool**
Open Memorial Day through Labor Day.



• **The Lodge** Featuring: Sugar Point Resort Merchandise, Pizza, Ice Cream Treats, Soda, Sandwiches and 1919® Root Beer.

• **Recreational Equipment Rentals** Kayaks, Paddleboats, Pontoon, Sports Gear, SUPs & More

• **Pets Welcome** Well behaved, quiet, leashed & cleaned up after. Some restrictions apply. Pet-Free cabins available.

• **Resort Activities & Beaches**



Camping



Beautiful Camping Area for tents and featuring full hook-ups for RVs!

Shower House & Coin Operated Laundry Facilities available



Sugar Point
RESORT
LEECH LAKE, MN

www.SugarPoint.com
218-654-3150